

### Safeguarding Communities from Harmful Chemicals



## ATSDR Fast Facts 2015

Worked in **600 communities** across the country.

Assessed whether **1.25 million people** were at risk because of harmful exposures to chemicals through nearly **150 health assessments and consultations**.

Guided EPA and other stakeholders to put **85.5% of our health protective recommendations into action**.

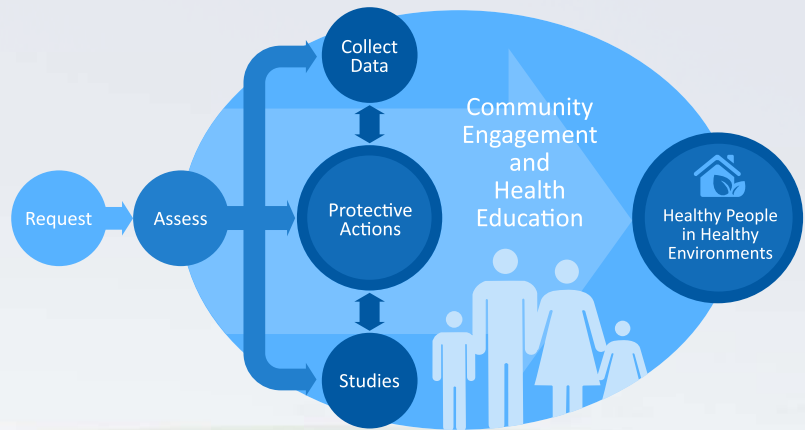
Responded to **approximately 50** environmental health emergencies, including a tank train derailment and several industrial fires.

Updated or newly released **15 ToxProfiles™**, increasing the scope of this reference library to cover 179 chemicals.



The Comprehensive Environmental Response, Compensation, and Liability Act of 1980 (CERCLA) – a.k.a., the "**Superfund**" Act – created ATSDR to be a science-based, public health agency working in communities with concerns about hazardous waste. For three decades, ATSDR has kept people in more than 6,000 communities across America safe from hazards in the environment.

## Protecting Communities



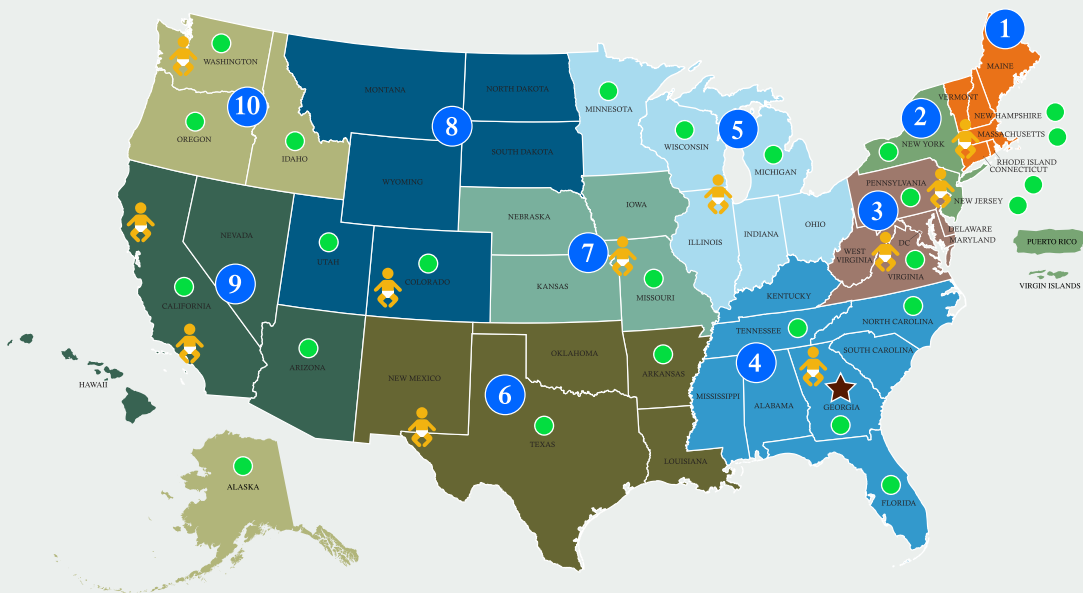
ATSDR Health Assessment Process

**ATSDR** follows a standard process to prevent harmful exposures and promote healthy community environments, including:

- Assessing the available scientific data to determine whether or not people are at risk because of their exposures to harmful chemicals in the environment.
- Recommending that EPA and other stakeholders take action to prevent and stop exposures, for example by installing water filters or replacing soil in residents' backyards. We continue to engage with these stakeholders to ensure that our recommendations are adopted.
- Collecting additional data or conducting health studies to better answer a community's questions when needed.

ATSDR's work relies on a close relationship with local community members and stakeholders. Throughout the process, we talk with residents to better understand their concerns and to share information about chemicals in the environment, their exposures, and the steps they can take to protect themselves.

## Strengthening the Environmental Health Workforce Across the Nation



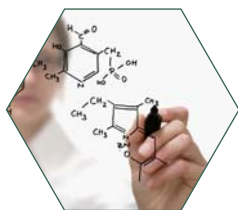
### Protecting communities relies on a wide range of professional expertise:

- Toxicologists
- Health Assessors and Environmental Scientists
- Engineers and Physical Scientists
- Health Education and Communication Specialists
- Environmental Health Clinicians
- Epidemiologists

ATSDR provides on-the-ground, localized support to communities through the work of 400 Environmental Health Professionals located in

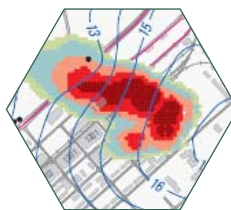
- 10 Regional Offices
- 25 State Public Health Departments
- 11 Pediatric Environmental Health Specialty Units
- ★ Headquarters

## Advancing Environmental Health Science and Medicine



### ToxProfiles™

ATSDR's ToxProfiles™ and associated resources provide comprehensive information on hundreds of chemicals for scientists, physicians and regulators. This information helps ATSDR determine when exposures in communities pose health risks.



### Mapping, Modeling, and Lab Analysis

ATSDR uses state-of-the-art tools and resources like geospatial analysis and modelling to understand how people are exposed to chemicals from the environment. ATSDR also leverages resources available at the Centers for Disease Control and Prevention, like laboratory analysis, to answer community questions.



### Environmental Medicine

In addition to educating health providers near the sites where we work, ATSDR provides training and resources to health providers across the country to help improve the diagnosis and treatment of environmentally-related illnesses.



### Registries, Studies, and Surveillance

ATSDR is working to better understand the relationship between exposures and health outcomes, and the distribution of illnesses associated with environmental exposures. The results of these activities inform future assessments and decision-making to protect health.